

## IdeZ IgG protease

**Cat.# 5000 units (125 uL)**

**Cat.# 25000 units (625 uL)**

**Description:** Similar to IdeS protease, IdeZ specifically cleaves peptide bonds below the hinge region of IgG to form Fc and F(ab')<sub>2</sub> fragments. IdeZ cleaves all subclasses of human, rabbit, sheep, and monkey IgG. IdeZ also cleaves mouse IgG2a and IgG3 more efficiently than IdeS. Engineered with a C-ter strep tag; can be removed by strep tactin beads.

### IdeZ IgG cleavage site:

CPAPPELLG\*GPSVF

**Unit definition:** One unit is defined as the amount of enzyme required to digest >95% of 1 ug of human IgG in 30 minutes at 37°C.

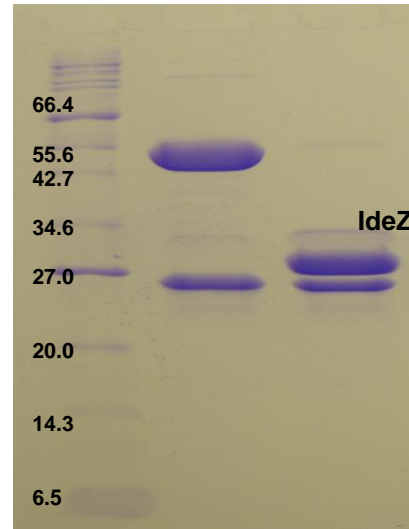
**Storage conditions:** Long term storage at -20 C. Avoid repeated freeze-thaw cycles.

**Purity:** >90% by SDS-PAGE gel

**Concentration:** 40 units/uL

**Formulation:** 50 mM Phosphate buffer pH 6.6, 150 mM NaCl

**Product Source:** Cloned from *Streptococcus equi* subspecies *zooepidemicus* and expressed in *E. coli*.



**Figure 1. Quality control assay. IdeZ IgG cleavage assay on SDS PAGE gel in reduced condition.**

Lane 1. Marker

Lane 2. Human IgG

Lane 3. Human IgG with IdeZ

### Protocol for IgG cleavage

1. Substrate concentration should be around 0.5-1mg/mL.
2. Around pH 7.4, add IdeZ to substrate and incubate at 37°C for at least 30 minutes.

### Reference:

1. Lannergård, Jonas, and Bengt Guss. "IdeE, an IgG-endopeptidase of *Streptococcus equi* ssp. *equi*." *FEMS microbiology letters* 262.2 (2006): 230-235.